

# Piedmont Koi and Watergarden Society



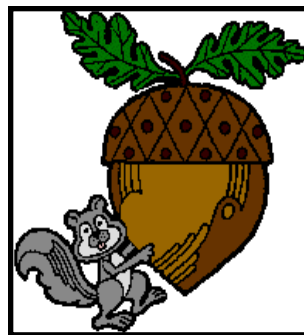
November 2008

## Fall Festival - November social to be in Walnut Cove

The fall festival will be held on November 8th at 3:00 p.m. in WALNUT COVE which is approximately two hours from Charlotte. Every one's to meet at Leo and Carol's house and we'll start the caravan. Directions to their house are on page 2. The plan is to gather at 12:30 a.m. and leave at 1:00 pm. to arrive at Walnut

Cove at 3:00 p.m. After enjoying their pond and babies, we will enjoy Mary's chicken stew. Ron and Mary's place has a commercial fish setup as they raise and sell fish also. Tanks and tanks of gorgeous babies will be there to tempt even the hardcore among us. (No, I am not adding any more fish to my pond - well, maybe just one

or two.) Bring your leftover carved pumpkins and we'll have a contest. If you're daring enough, wear your leftover Halloween costumes.



### Inside this issue:

Fall Festival	1
October Social	1
Treasurer's Report	1
Calendar	2
Recipe	2
Officers	2
Directions	3
RECIPE	3
Ballot Form	4

### OCTOBER SOCIAL HELD AT RUSSELL AND REBECCA TRULLS'

As usual, the food was fantastic and Russell and Rebecca have a beautiful home with a wonderful tikki bar and pool for the humans and equally impressive ponds. Rebecca and Russell are new members and we really appreciate their hard work. Rebecca was tasked with the mammoth job and coming up with a slate of officers for the December meeting and , boy, did

**GEOFFREY HUNTLEY, OUR PRESIDENT HAS BEEN UNDER THE WEATHER AND HERE'S HOPING HE'S FEELING MUCH BETTER. WE MISS YOU, GEOFFREY!!!**

**2008**

**Social Calendar**

**MCCORKLEVILLE**

DECEMBER 13 – Christmas Party AT  
Tanya & Tracy McCorkle's

Treasurers Report

Balance as of

11/1/08

\$17,431.79

2008 Calendar of Events

. November 8 – Tarheel Fish Farm, Walnut Cove NC

. December 13 – Christmas Party - Tracy & Tanya McCorkle

PKWS 2008  
OFFICERS

President -

Geoffrey Huntley

704-510-1594

Vice Pres.-

Tracy McCorkle

704-536-5931

Secretary – Carol Mathis 704

-455-8587

Treasurer – Darlene Shotts

704-784-1066

Membership – Dawn Mize

980-235-9414

Newsletter – Carol Mathis

704-455-8587

Property Manager – Darrell

Mauldin 704-573-3663

Webmaster – Mike Long 704

-947-6141

RECIPES

Sweet & Sour Broccoli Salad

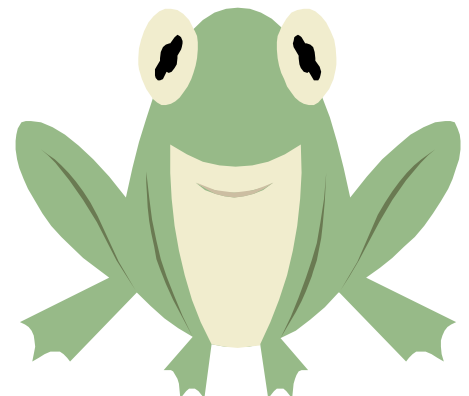
- 1 Head of Fresh Broccoli
- ½ Red Bermuda Onion
- 3/8 Cup Salted Cashew pieces
- 3/8 Cup Raisins (about 1 small box)
- ½ Cup Mayonnaise
- ¼ Cup Honey
- 1/8 Cup Apple Cider Vinegar
- 2 strips bacon, fried crisp, crumbled

Cut all broccoli florets from the stems and break into small pieces. Chop the onion and dice into about ¼" pieces and add to the broccoli with the raisins. Toss well and distribute evenly.

In a separate bowl, whisk the mayonnaise to smooth out the texture.

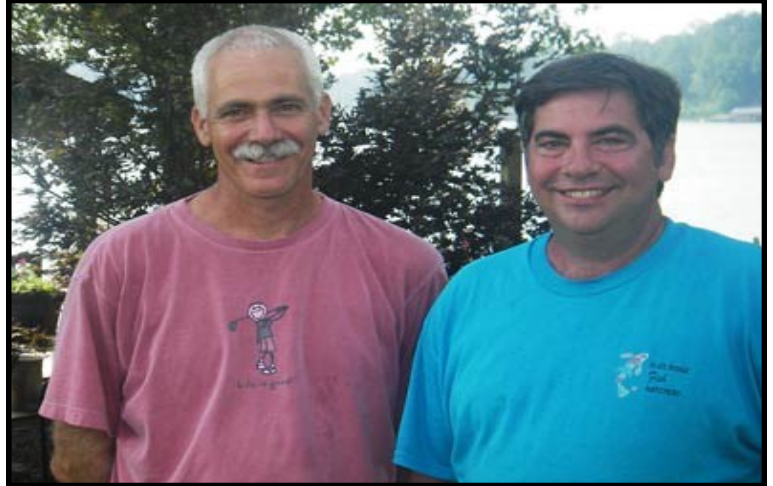
Next add the honey and vinegar and whisk to blend the dressing. Dress the broccoli and toss well to thoroughly combine the veggies and the dressing. Chill well.

Just before serving, add the cashew pieces and bacon, mix in. Sit back and E N J O Y !





Due to a scheduling problem, our trip to Blue Ridge Fish Hatchery has been cancelled. I Sorry for any disappointments, but we'll schedule for another time. Visit



Owners: Randy LaFever and Rick Brown

### TRIP TO BLUE RIDGE HAS BEEN CANCELLED

PLEASE COME JOIN US FOR THE 2008 FALL FESTIVAL ON SATURDAY, NOVEMBER, 8TH.. MARY WILL BE HAVING HER FAMOUS CHICKEN STEW.. EVERYTHING WILL BE PROVIDED EXCEPT FOR YOUR CHOICE OF DRINK. BRING CHAIRS.

#### Directions:

I-85N toward Greensboro. Merge onto US 52N via exit 87 toward Lexington/Winston-Salem.

Continue on US 52N. Take the Germanton Rd/NC-8N, exit 114. Turn left onto Germanton Rd/NC-8. Continue to follow NC-8. Stay straight and go onto NC-65.

Turn left onto US-311/NC-65, continue to follow NC-311 for .9 miles.

Turn right onto East1st Street.

East 1st Street will become Oldtown Rd. They are located 2.5 miles on left at **1819 Oldtown Rod, Walnut Cove, North Carolina 27052.**

If you planning on driving on your own, it's about a two hour drive from Charlotte....If you have problems please feel free to call Ron or Mary at 336-591-7720.

If you're going from Carol and Leo's, meet at their house at 12:30 and we'll get on the road by 1:00 p.m. We are not renting a bus, we're going caravan style.

### PREPARING YOUR POND FOR WINTER

It is time to look into a few preparations to have our pond better prepared for next spring. Leaves decaying in the pond will throw off the ecological balance of the water. One option is to use a net and skim leaves off the surface of the pond and this can be a daily chore. A pond skimmer can clog too rapidly in the peak of fall unless emptied multiple times per day. Installing leaf netting over the pond will be easier to maintain. Leaf netting comes in different mesh sizes and dimensions, including custom-cut netting.

As the air temperature begins to drop, so will the water temperature of the pond. As it does, we should be slowly preparing the fish for winter. Do this by gradually reducing the amount of food they are receiving. When the water temperatures fall below 60 degrees you should begin feeding with a lower protein content food. The protein content should be 25% or less. As the temperature continues to fall, feed your fish only two or three times a week. It can take your fish two or three days to digest food at this temperature.

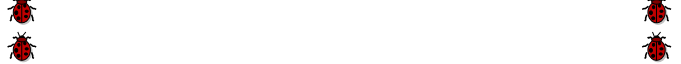
Once the temperature drops below 50 degrees, you should stop feeding altogether until spring when the water temperature remains above 50. Reminder:

**The water temperature is what is relevant, not the temperature of the air.**

Sludge on the bottom of the pond should be removed as best you can. If it is about **1/4" THICK OR SO, IT IS NORMAL AND SHOULD NOT BE A CONCERN.** This sludge is a combination of decaying plant debris, leaves, fish waste, and more. Some of this can be removed with a net. The finer debris can be removed by siphoning or by using a vacuum. Remember to continue to use beneficial bacteria. Microbe-Lift Autumn/Winter Prep is made for cooler weather and can be used throughout the winter. These bacteria will reduce maintenance by breaking down sludge and debris as well as sustaining biological activity throughout the cold winter months.



### DIRECTIONS TO CAROL AND LEO'S

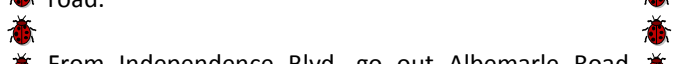


From Matthews, take Hwy 51 north to Albemarle Road.

Turn left on Albemarle Road and then right at first light onto Rock River Church Road.

Follow for five miles until you come to Biltmore Drive on the left.

Turn left and go straight into driveway at curve of the road.



From Independence Blvd, go out Albemarle Road approx 8.3 miles and after you cross I-485, turn left

onto Rocker River Church road and follow above directions.

From Concord, come out Rocky River Road, to Presbyterian Church and turn at light. Go 1.5 miles and

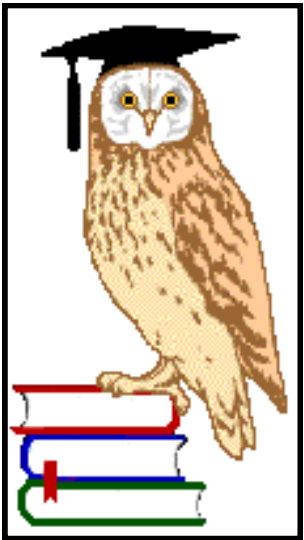
Biltmore will be on right..

Address is 1284 Biltmore – telephone is 704-455-8587 if you get lost.



As the foliage on your hardy plants begins to die, you should remove any dead and dying leaves and place the plant deep enough in the pond to keep the roots from freezing. While it is true some marginal plants will survive even if their roots freeze solid, it is best to lower all of your plants below the freeze zone. You should have stopped feeding your plants by this point.

\*\*\*\*\*



**BALLOT OF OFFICERS FOR 2009**

**PRESIDENT**

\_\_\_Mike Long

\_\_\_

First Order of Business for December Meeting

Please make your vote count. Attend the Christmas Meeting at Tracy and Tanya McCorkle's.

**VICE PRESIDENT**

\_\_\_Tracy McCorkle

\_\_\_

V

**SECRETARY**

\_\_\_Rebecca Trull

\_\_\_

O

**TREASURER**

\_\_\_Terri Havey

E

T

**PKWS**

Carol Mathis  
1284 Biltmore Drive  
Concord, NC 28025

Phone: 704-455-8587

Email: caomah@aol.com



**MEMBERSHIP FORM**

The Piedmont Koi and Watergarden Society (PKWS) is a not for profit organization. The membership year runs from January 1st through December 31st. Annual Membership Dues for a family for the first year are \$49.00 AND INCLUDES A NAME BADGE. For renewing members the dues are \$24.00 Additional nametags may be purchased at a cost of \$7.00 each. Please complete the following form and return it with your membership dues to:

**Dawn Mize  
6918 Carriageway Lane  
Charlotte NC 28227**

Please print clearly (this information will only be used for club records). Please print your names) as you would like them to appear on your name tag(s).

Last Name: \_\_\_\_\_ First Name(s): \_\_\_\_\_

Address 1: \_\_\_\_\_

Address 2: \_\_\_\_\_

City: \_\_\_\_\_ State: \_\_\_\_\_ Zip: \_\_\_\_\_

Signature: \_\_\_\_\_ Date: \_\_\_\_\_

Membership Dues(New member) \$49.00  
Membership Dues(Renewing) \$24.00 (Circle One)